

# QUECTEL

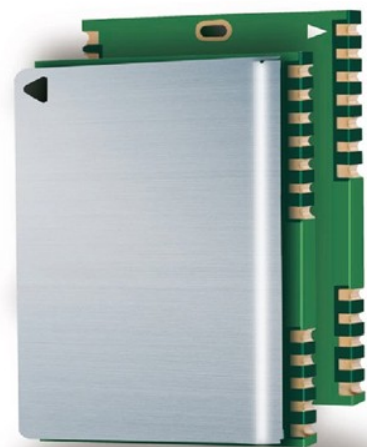
**EDDY**  
**WIRELESS**®  
sales@eddywireless.com

## L20

### Quectel GPS Engine

## EVB User Guide

L20\_EVB\_User\_Guide\_V1.0



<b>Document Title</b>	L20 EVB User Guide
<b>Version</b>	1.0
<b>Date</b>	2010-12-20
<b>Status</b>	Release
<b>Document Control ID</b>	L20_EVB_User_Guide_V1.0

### **General Notes**

Quectel offers this information as a service to its customers, to support application and engineering efforts that use the products designed by Quectel. The information provided is based upon requirements specifically provided to Quectel by the customers. Quectel has not undertaken any independent search for additional relevant information, including any information that may be in the customer's possession. Furthermore, system validation of this product designed by Quectel within a larger electronic system remains the responsibility of the customer or the customer's system integrator. All specifications supplied herein are subject to change.

### **Copyright**

This document contains proprietary technical information which is the property of Quectel Limited. The copying of this document, distribution to others, and communication of the contents thereof, are forbidden without express authority. Offenders are liable to the payment of damages. All rights are reserved in the event of a patent grant or registration of a utility model or design. All specification supplied herein are subject to change without notice at any time.

***Copyright © Shanghai Quectel Wireless Solutions Co., Ltd. 2010***

## Contents

0. Revision History .....	5
1. Introduction.....	6
1.1. Reference.....	6
1.2. Abbreviations .....	6
2. EVB Kit Introduction.....	7
2.1. EVB Top and Bottom View.....	7
2.2. EVB Accessories.....	9
3. Interface Application.....	10
3.1. Power Interface .....	10
3.2. UART Interface .....	11
3.3. Antenna Interface .....	12
3.4. Switches .....	12
3.5. Operating Status LEDs.....	13
3.6. Test Points .....	14
4. EVB and Accessories.....	15
5. Starting SiRFLive .....	16

## Table Index

TABLE 1: REFERENCE.....	6
TABLE 2: ABBREVIATIONS.....	6
TABLE 3: PINS OF UART PORT.....	11
TABLE 4: SWITCHES AND BUTTONS.....	13
TABLE 5: OPERATING STATUS LEADS.....	13
TABLE 6: PINS OF J102 & J104.....	14

## Figure Index

FIGURE 1: EVB TOP VIEW .....	7
FIGURE 2: EVB BOTTOM VIEW .....	8
FIGURE 3: EVB ACCESSORIES .....	9
FIGURE 4: POWER INTERFACE .....	10
FIGURE 5: UART INTERFACE .....	11
FIGURE 6: ANTENNA INTERFACE .....	12
FIGURE 7: SWITCHES.....	12
FIGURE 8: OPERATING STATUS LEDS .....	13
FIGURE 9: TEST POINTS J102 & J104 .....	14
FIGURE 10: EVB AND ACCESSORY EQUIPMENTS .....	15

## 0. Revision History

Revision	Date	Author	Description of change
1.0	2010-12-20	Roy Chen	Initial

## 1. Introduction

This document defines and specifies the usage of L20 EVB (Evaluation Board). Customer can get useful information about L20 EVB and GPS demo tool from this document.

### 1.1. Reference

**Table 1: Reference**

SN	Document name	Remark
[1]	L20_HD	Hardware Design

### 1.2. Abbreviations

**Table 2: Abbreviations**

Abbreviation	Description
C/NO	Carrier/Noise
GPS	Global Positioning System
HDOP	Horizontal Dilution of Precision
SV	Satellite Vehicle
UART	Universal Asynchronous Receiver & Transmitter
USB	Universal Serial Bus
UTC	Universal Time Coordinated

## 2. EVB Kit Introduction

### 2.1. EVB Top and Bottom View

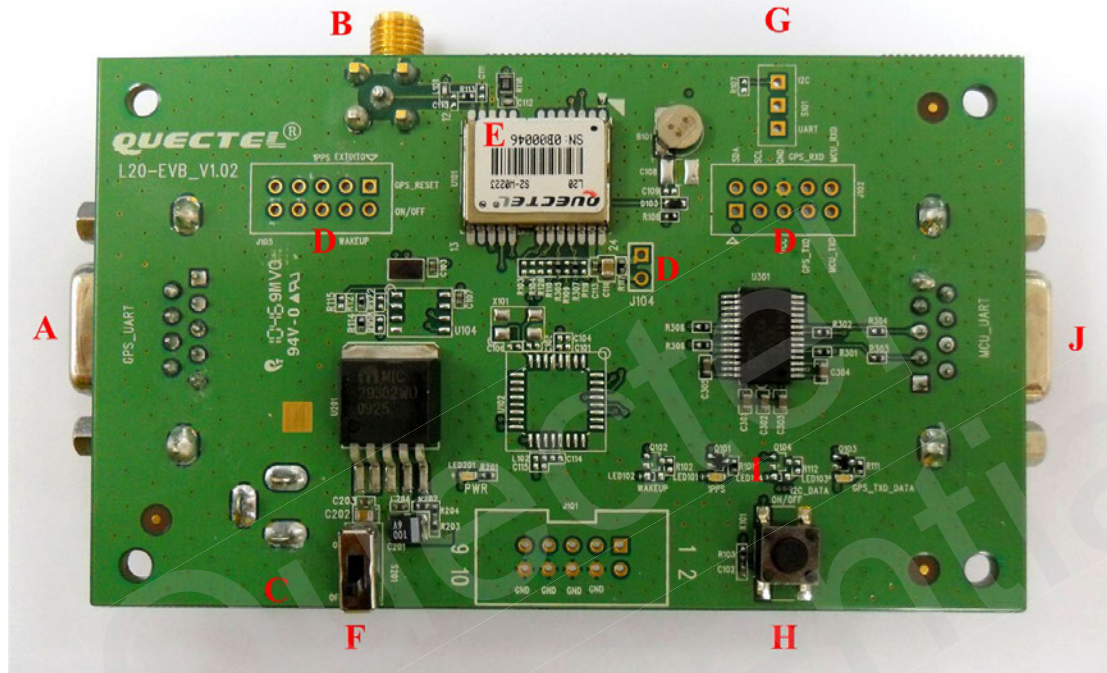
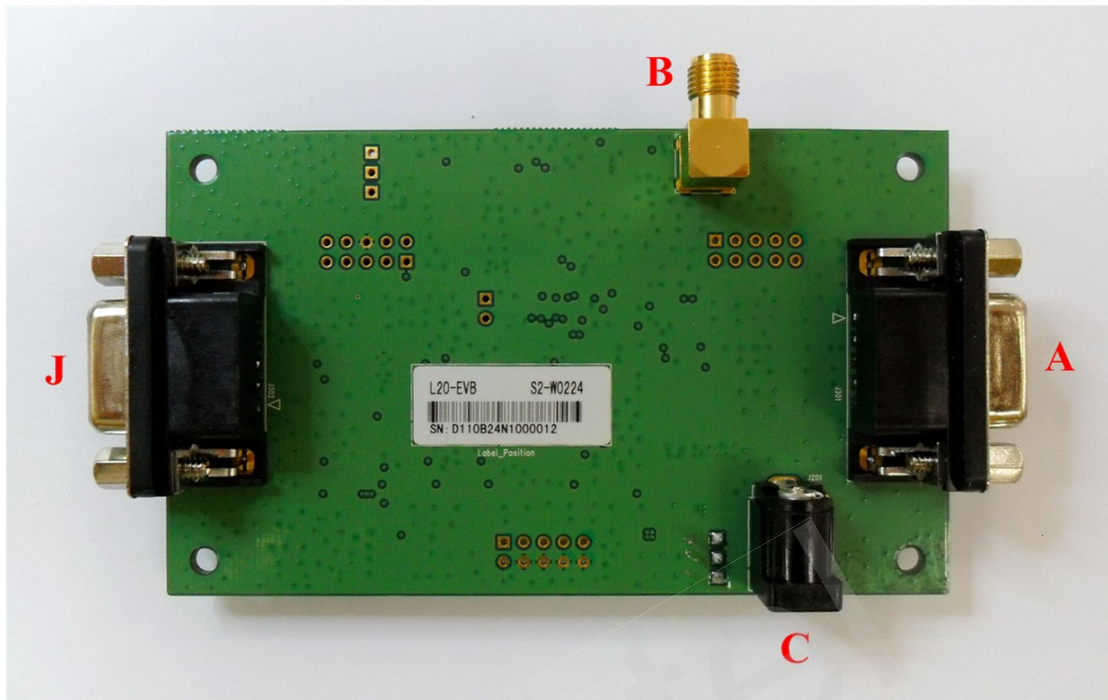


Figure 1: EVB top view





**Figure 2: EVB bottom view**

- A: GPS UART port
- B: Antenna interface
- C: Adapter interface
- D: Test points
- E: L20 Module
- F: POWER switch
- G: NC switch (Reserve for future development)
- H: NC button (Reserve for future development)
- I: Indication LEDs
- J: MCU UART port (no use)

## 2.2. EVB Accessories



**Figure 3: EVB accessories**

- A: GPS active antenna (3.3V)
- B: Serial port cable (USB 2.0)
- C: DC5V/2A power adapter

### 3. Interface Application

#### 3.1. Power Interface

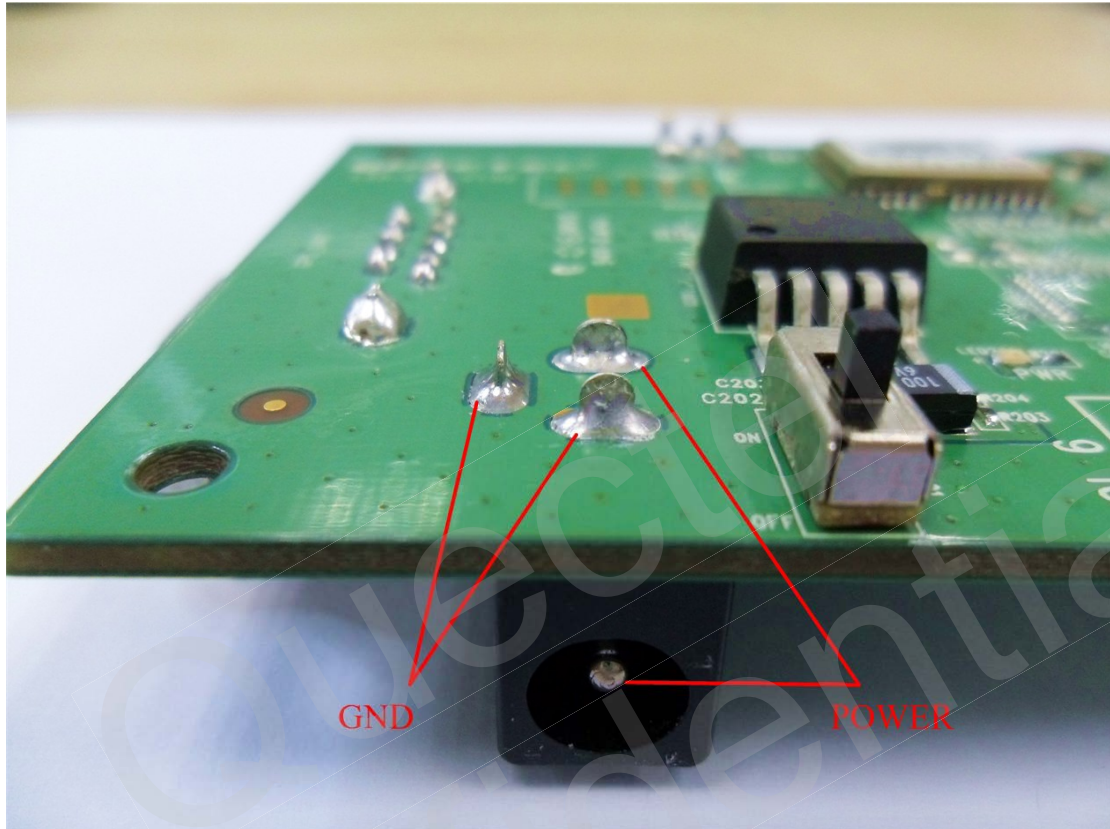


Figure 4: Power interface

### 3.2. UART Interface

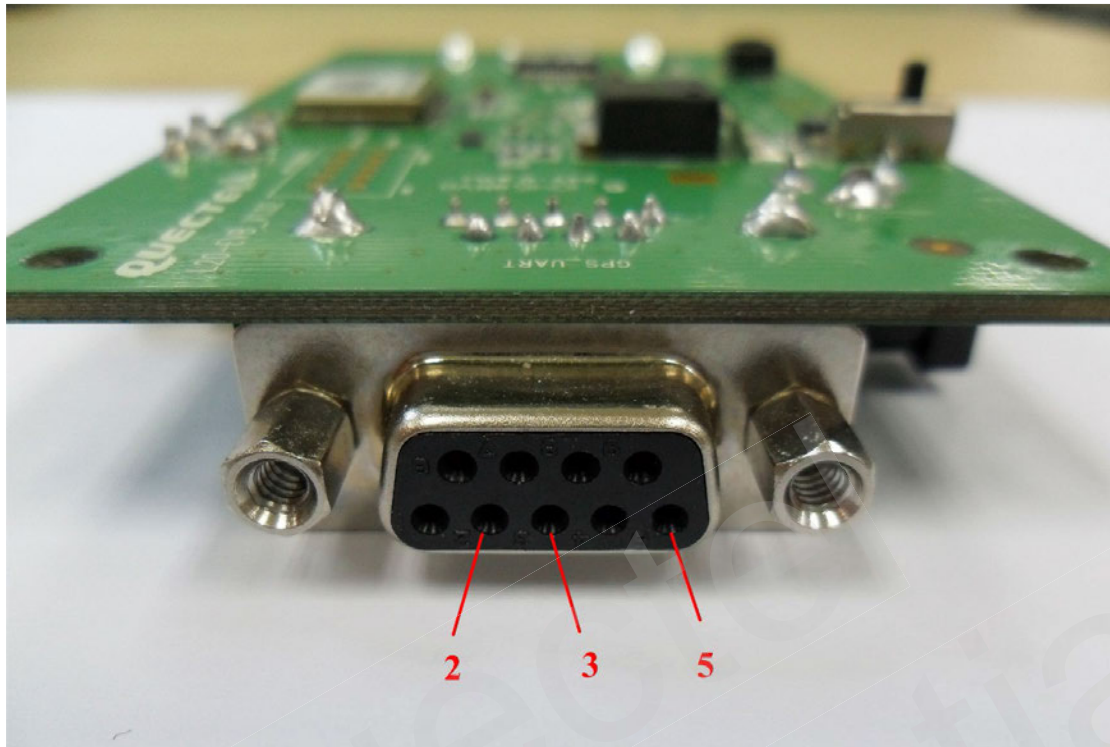


Figure 5: UART interface

Table 3: Pins of UART port

Pin	Signal	I/O	Description
2	TXD(RS232)	O	Transmit data
3	RXD(RS232)	I	Receive data
5	GND		GND

### 3.3. Antenna Interface

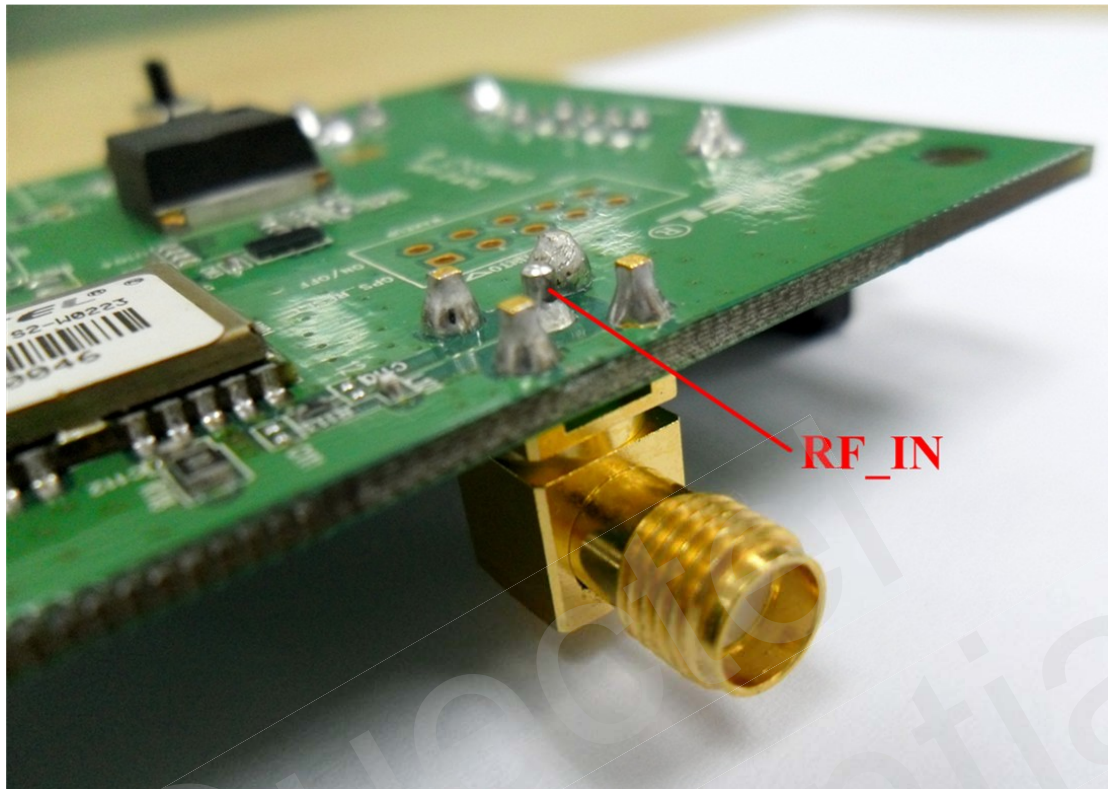
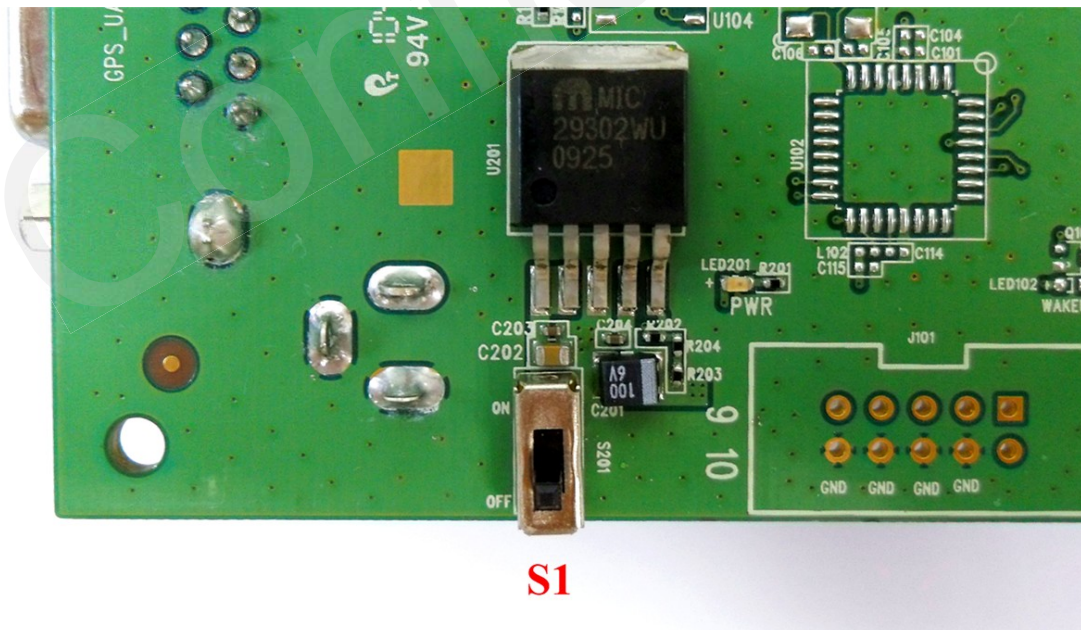


Figure 6: Antenna interface

### 3.4. Switches



S1

Figure 7: Switches

Table 4: Switches and buttons

Part	Name	I/O	Description
S1	POWER	I	Control power supply from adapter

### 3.5. Operating Status LEDs

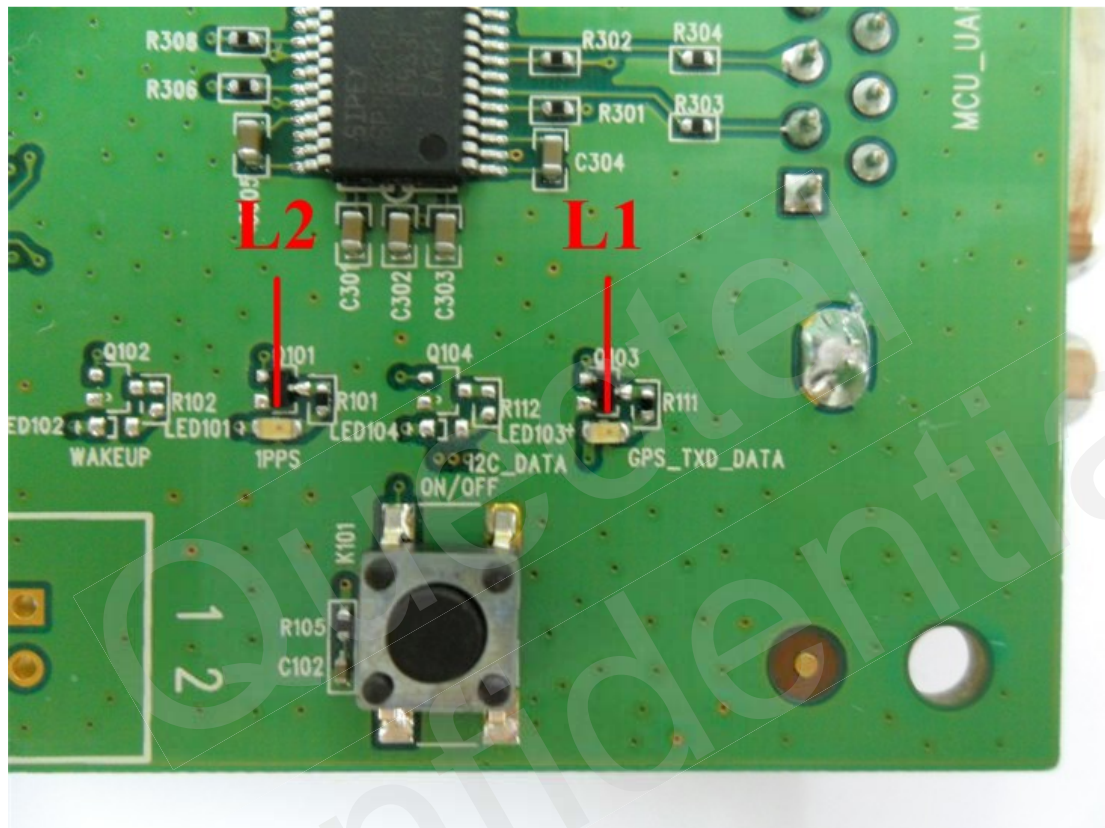


Figure 8: Operating status LEDs

Table 5: Operating status LEDs

Part	Name	I/O	Description
L1	GPS_TXD_DATA	O	Flash: GPS Data export from TXD Extinct: no data
L2	1PPS	O	TBD

### 3.6. Test Points

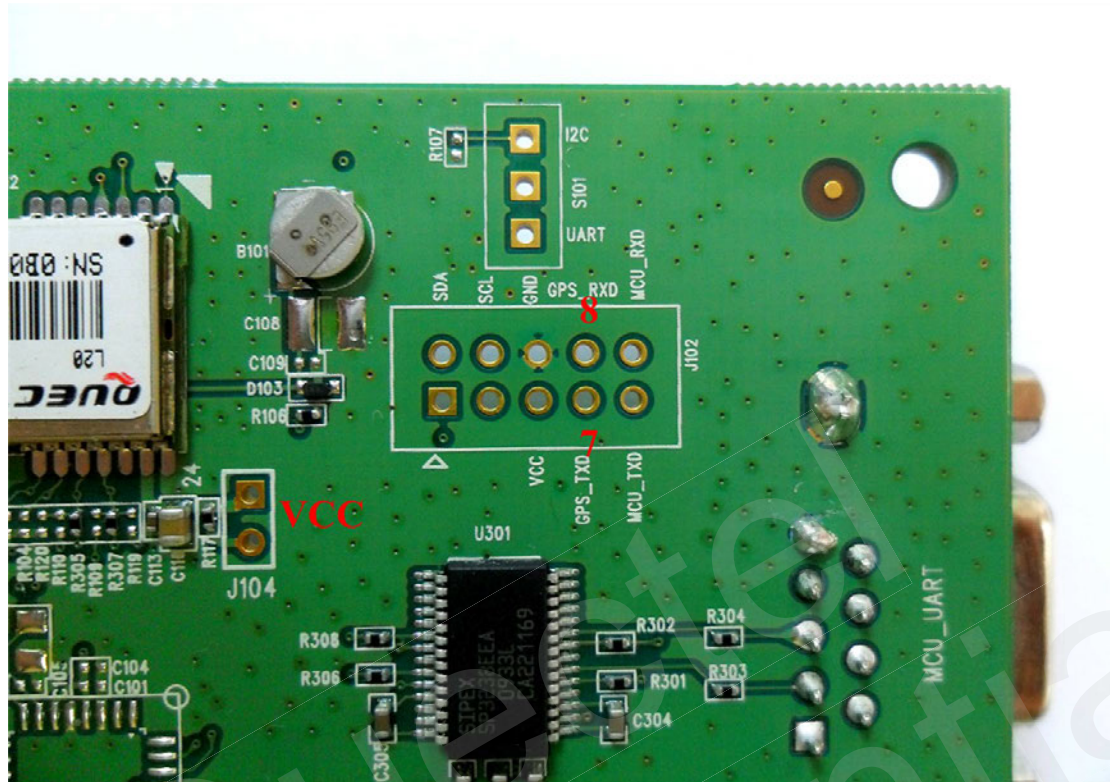


Figure 9: Test points J102 & J104

Table 6: Pins of J102 & J104

Pin	Signal	I/O	Description
7	TXD1	O	Transmit GPS data
8	RXD1	I	Receive GPS data
	VCC	I	Supply voltage to module

## 4. EVB and Accessories

The EVB and its accessories are equipped as shown in Figure 10.



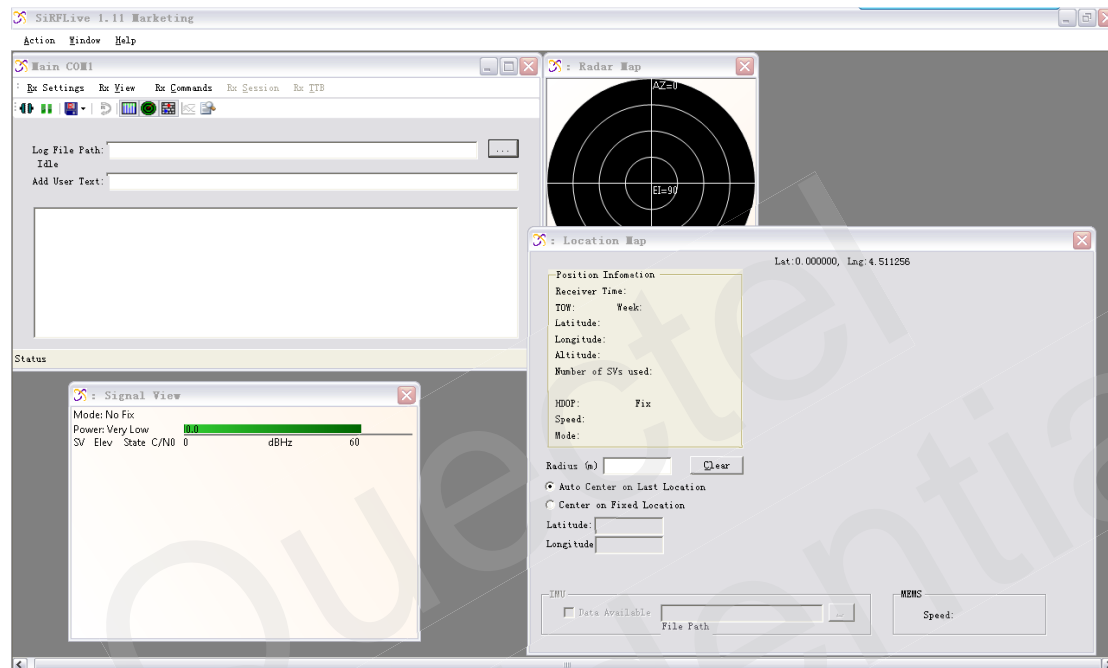
**Figure 10: EVB and accessory equipments**



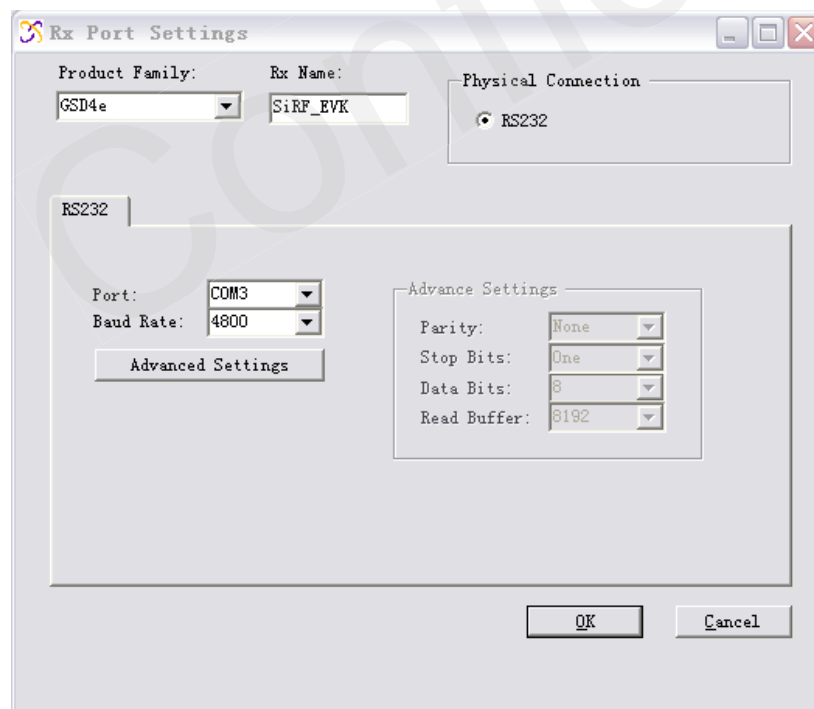
## 5. Starting SiRFLive

The SiRFLive tool can help user to view the status of GPS receiver and record NMEA data. The steps of using SiRFLive for L20 are described as below:

1. After finishing assembling the EVB as figure 10, connect the RS232 to USB cable to PC, and power on the module, the LED GPS\_TXD\_DATA will be flash. The operation window of SiRFLive is shown below:



2. Click the button **Rx Settings** to select COM port and baud rate 4800 in pop-up window:



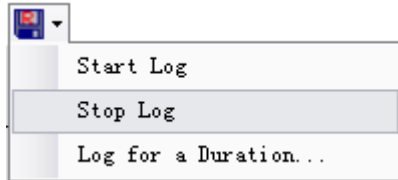


5. Select reset mode and click “Send” to implement Cold Start, Warm Start or Hot Start.

Save NMEA data with below toolbar:



6. Record log and Stop log with below menu:



# QUECTEL



Shanghai Quectel Wireless Solutions Co., Ltd.

Room 501, Building 9, No.99, Tianzhou Road, Shanghai, China 200233

Tel: +86 21 5108 2965

Mail: [info@quectel.com](mailto:info@quectel.com)

**EDDY**  
WIRELESS®

[sales@eddywireless.com](mailto:sales@eddywireless.com)