



# M66 GSM Module Presentation

August, 2014

# Contents

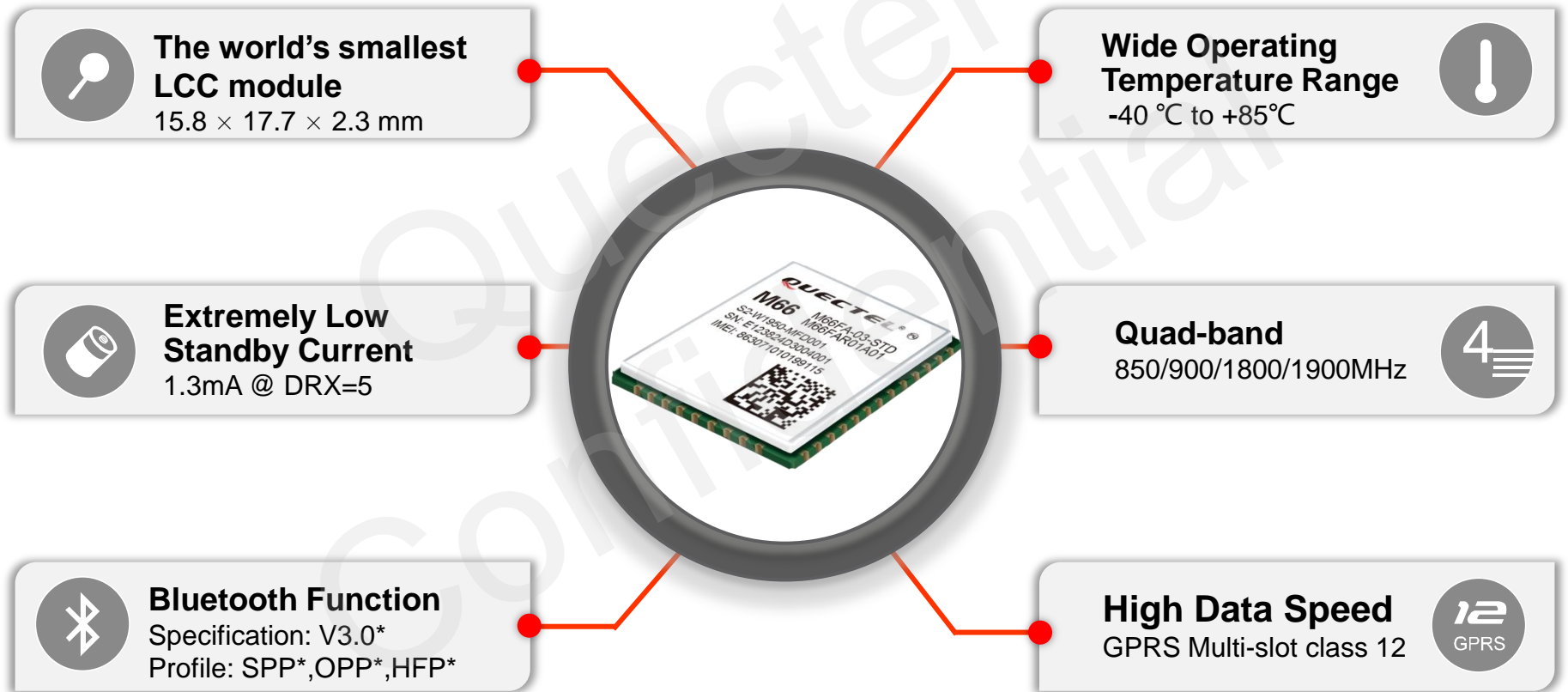
**General Description**

**M66 Vs. Competitors' Products**

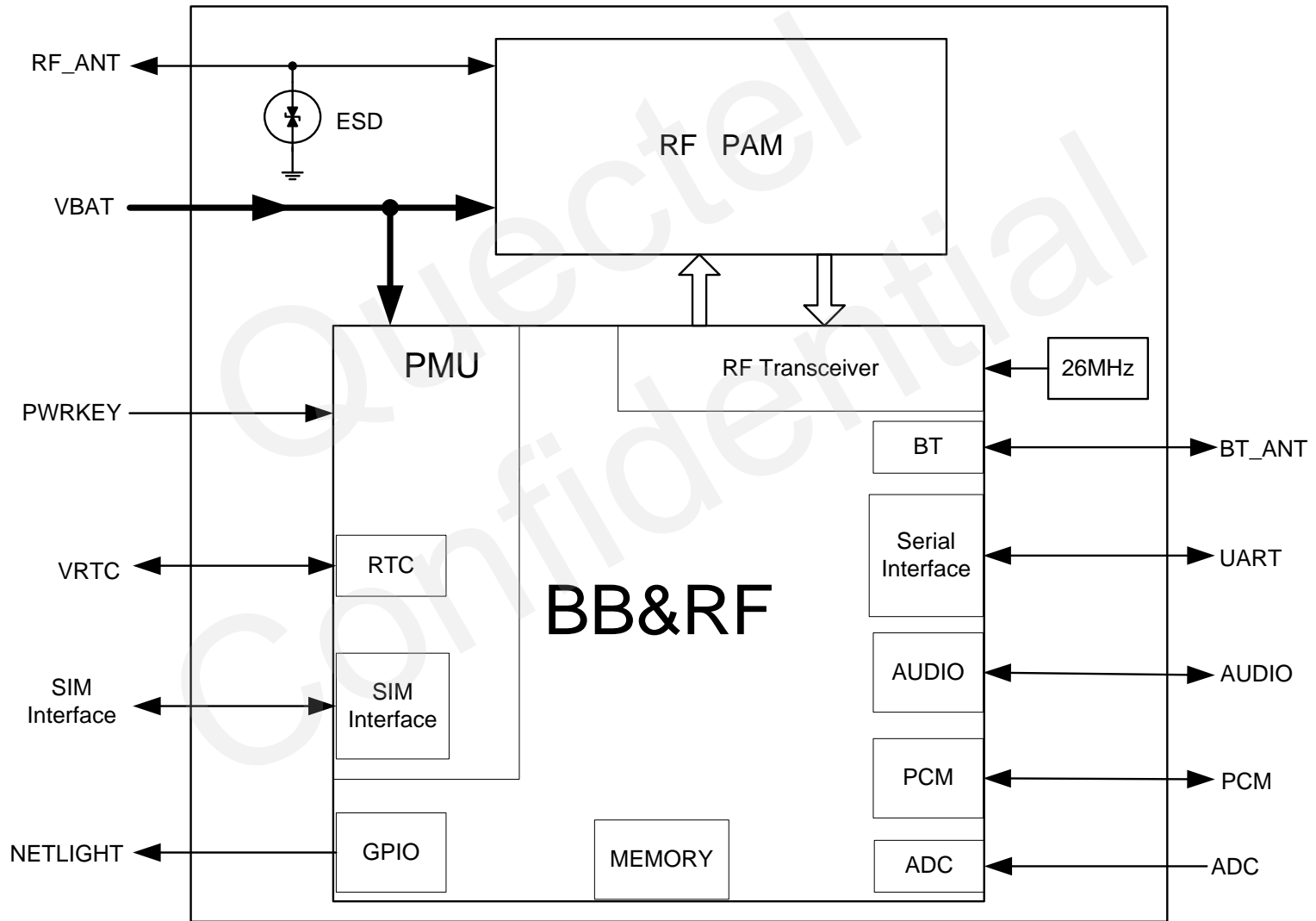
**Support Package**



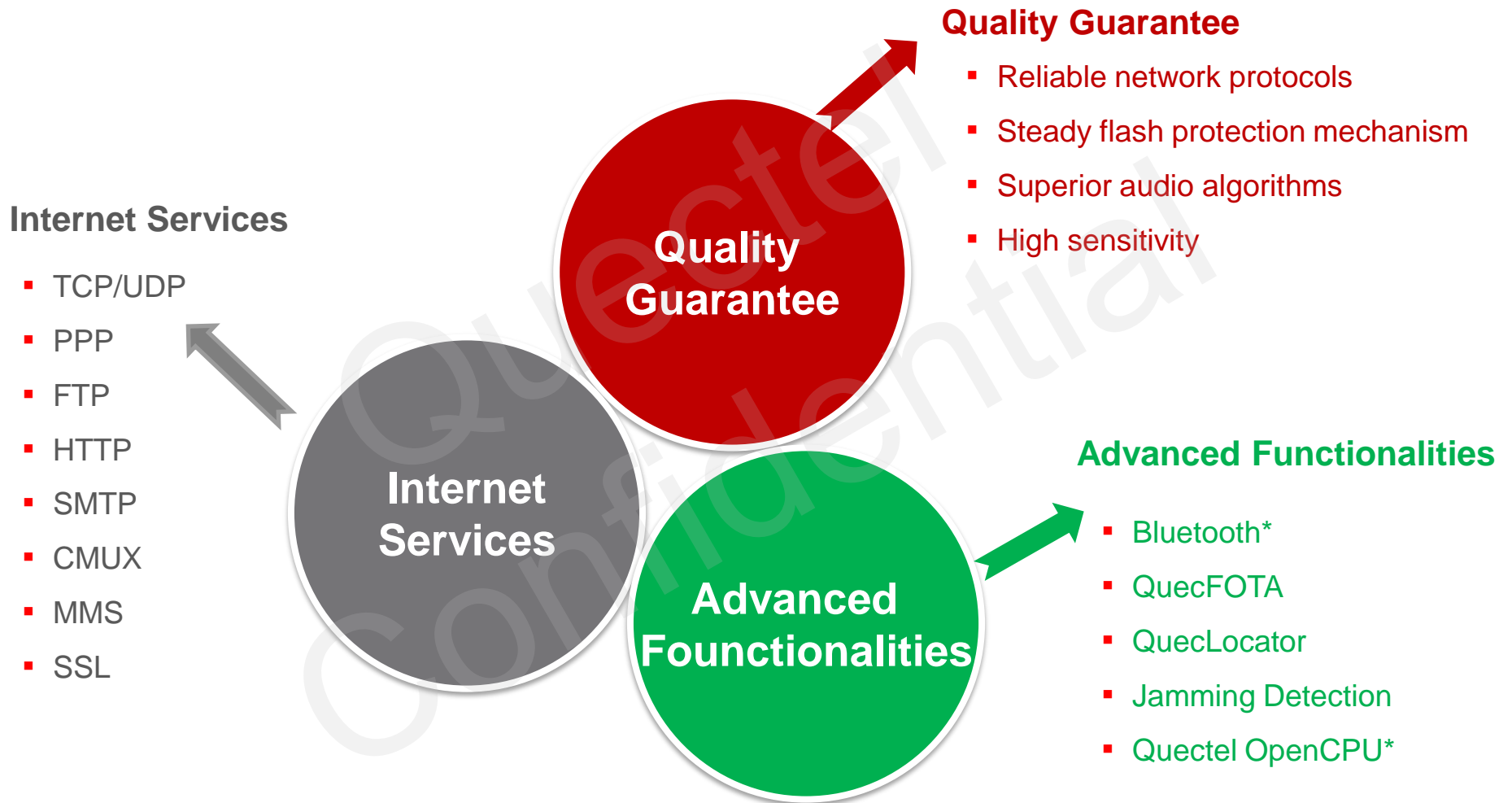
# Highlights




# Hardware Architecture



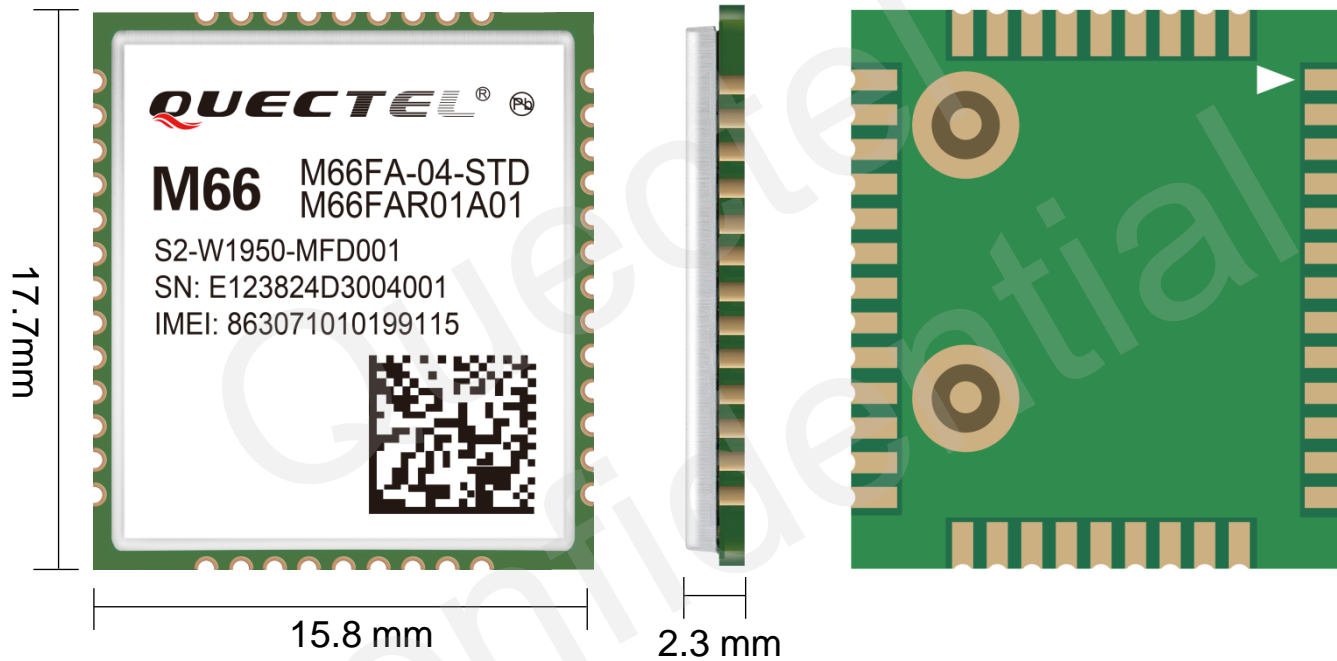
# Software Advantages



# Enhanced AT Commands

- 
- Standard V.25ter AT commands
  - GSM 07.07
  - GSM 07.05 (SMS)
  - GPRS AT commands in accordance with GSM 07.07
  - TCP/IP stack AT commands
  - STK (SIM Application Toolkit)
  - Quectel defined AT commands (Enhanced Functions)

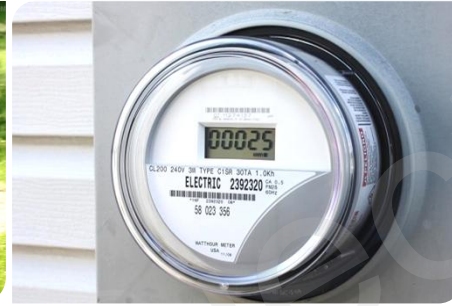
# Mechanical Dimensions



Length:	17.7 mm ( $\pm 0.15$ mm)
Width:	15.8 mm ( $\pm 0.15$ mm)
Height:	2.3 mm ( $\pm 0.2$ mm)
Weight:	Approx. 1.3g



# Target Applications



**Smart Metering**  
**Wireless POS**  
**Personal Tracking**  
**Industrial PDA**  
**Wearable Devices**





# Contents

General Description

M66 vs. Competitors' Products

Support Package



# M66 vs. Competitors' Products

M66 vs. XE866 & SIX800H & WX6318				
Product Features	M66	T-company XE866	S-company SIX800H	S-company WX6318
Size (mm)	15.8×17.7×2.3	17.2×13.2×2.1	15.8×17.8×2.4	15.05×17.85×2.5
Weight(grams)	1.3	1.5	1.35	
Package	LCC, easier soldering and production	LGA package	LGA package	LGA package
Band	Quad-Band	Quad-Band	Quad-Band	Dual-Band (GSM900/1800MHz)
GPRS Class	Class 1-12 (configurable)	Class 10	Class 1-12 (configurable)	Class 10
Sensitivity(dBm)	-109@850/900/1800/1900 MHz	-108 @ 850/900 MHz -107 @1800/1900 MHz	-108@850/900/1800/1900 MHz	-109@900/1800MHz
Audio Interface	2 output channels and 1 input channel	1 input/output channels	2 input/output channels	2 output channels and 1 input channel
PCM	Yes	Yes	Yes	Yes
Bluetooth	Yes	No	Yes	No
UART	3 (one for debug)	2 (one for debug)	1	2 (one for debug)

# Contents

General Description

M66 vs. Competitors' Products

Support Package



# Technical Materials Package

## Technical Materials Package

- Hardware, software, specification
- Application notes package
- Debug tool, download tool, test tool,
- EVB package
- Approvals & test report package

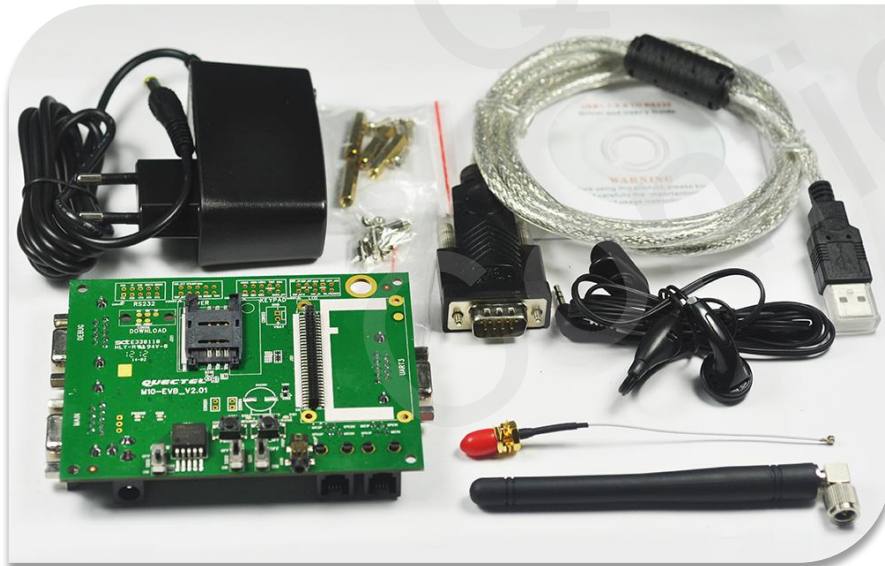
## Development Tool

### ▪ Interfaces

- 3 RS-232 interfaces
- Power supply
- Antenna interface
- Debug UART interface
- Handset interface
- Earphone interface

### ▪ Feature

- Network status LED
- Power key
- Emergency off key





Q&A...

*Thank you*

