



*GPS  
Vehicle  
Tracker*

---

**USER MANUAL  
V5.0**

**EDW-310**



---

## Contents

<b>1</b>	<b>Product Overview</b>	<b>3</b>
<b>2</b>	<b>For Your Safety</b>	<b>3</b>
<b>3</b>	<b>EDW-310 Parameters</b>	<b>3</b>
<b>4</b>	<b>Getting Started</b>	<b>4</b>
4.1	Hardware and Accessories	4
4.2	Light and Button Functionality	4
4.3	Connecting and Installation	5
4.4	Examples of Interfacing Application	6
<b>5</b>	<b>SMS Command</b>	<b>8</b>
5.1	Basic SMS Commands	8
5.1.1	Position Report	8
5.1.2	Set Interval for Automatic Timed Report	8
5.1.3	Stop Automatic Timed Report	8
5.2	GPRS Setting by SMS	8
5.2.1	Set ID for EDW-310	9
5.2.2	Set APN	9
5.2.3	Set IP Address and Port	9
5.2.4	Set Time Interval for Sending GPRS Packet	9
5.2.5	Enable GPRS Tracking Function	9
<b>6</b>	<b>Tracking on Map</b>	<b>9</b>
<b>7</b>	<b>Troubleshooting</b>	<b>11</b>
<b>8</b>	<b>SMS Command List</b>	<b>12</b>

---

## 1 Product Overview

EDW-310 is a GPS/GSM/GPRS tracking device which is specially developed and designed for vehicle real-time tracking and security. With superior GPS and GPRS modules, EDW-310 has good sensitivity and stable performance. It can get accurate GPS fix even in remote places.

### Main Features:

*Tracking via SMS or GPRS (TCP/UDP)*

*Current location report*

*Tracking by time interval*

*Position logging capacity up to 260,000+ waypoints*

**Store in GPS blind area & forward when GPRS re-establish**

*Built-in motion sensor for power saving*

*SOS panic button*

*Geo-fencing control*

*Low battery alert*

*Speeding alert*

*Engine Cut*

*Wiretapping (optional)*

*Alert when EDW-310 enters/exits GPS blind area*

*Alert when EDW-310 is turned on*

*I/O: 5 digital inputs, 3 negative and 2 positive triggering; 5 outputs.*

*Analog Input: 2 10 bits resolution analog inputs*



## 2 For Your Safety

Read these simple guidelines. Not following them may be dangerous or illegal. Read the full user manual for more information.

*Proper Connection* - When connecting with other device, read carefully its manual so as to carry out correct installation. Do not connect it to other incompatible devices.

*Qualified Accessories* - Use original parts, qualified batteries and peripheral equipments to avoid damage to EDW-310.

*Safe Driving* - Drivers should not operate this product while driving. -----

*Qualified Service* - Only qualified personnel can install or repair EDW-310.

*Water Resistance* - EDW-310 is not water resistant. Keep it dry. Install it inside the vehicle or use waterproof bag if necessary.

*Confidential Phone Number* - For safety reason, do not tell other people the mobile phone number of your EDW-310 without taking precautions of security settings.

### 3 EDW-310 Parameters

Power Supply	+9V - +35V / 1.5A
Backup Battery	900mAh
Dimension	104mm x 62mm x 24mm
Installation Dimension	104mm x 83mm x 24mm
Weight	150g
Operating temperature	-20° to 55° C
Humidity	5% to 95% Non-condensing
Frequency	GSM 900/1800/1900Mhz or GSM 850/900/1800/1900Mhz
GPS Module	latest GPS SIRF-Star III chipset
GPS Sensitivity	-158Db
GPS Frequency	L1, 1575.42 MHz
C/A Code	1.023 MHz chip rate
Channels	20 channel all-in-view tracking
Position Accuracy	10 meters, 2D RMS
Velocity Accuracy	0.1 m/s
Time Accuracy	1 us synchronized to GPS time
Default datum	WGS-84
Reacquisition	0.1 sec., average
Hot start	1 sec., average
Warm start	38 sec., average
Cold start	42 sec., average
Altitude Limit	18,000 meters (60,000 feet) max.
Velocity Limit	515 meters/second (1000 knots) max.
LED	2 LED lights to show GPS/GSM working status.
Flash Memory	8MB
Interface	5 digital inputs, 3 negative and 2 positive triggering; 2 analog inputs; 5 outputs.

### 4 Getting Started

This section will describe how to set up your

#### EDW-310. 4.1 Hardware Features

EDW-310 includes:

- EDW-310 Main Unit
- GPS Antenna
- GSM Antenna
- Wires
- USB Cable with converter
- CD including
  - User Manual
  - Other document or software if required



## 4.2 Light and Button Functionality

Blue LED - indicating GPS status	
On	One or more inputs are active
Flashing ( every 0.1 second)	The unit is being Initialized
Flashing (on for 0.1 second and off for 2.9 seconds)	EDW-310 has a GPS fix
Flashing (on for 1 second and off for 2 seconds)	EDW-310 has no GPS fix
Green LED - indicating GSM status	
On	One call is coming in/ one call is being made
Flashing ( every 0.1 second)	The unit is being Initialized
Flashing (on for 0.1 second and off for 2.9 seconds)	EDW-310 is connected to the GSM network
Flashing (on for 1 second and off for 2 seconds)	EDW-310 is not connected to the GSM network

SOS Button	Press it to send SMS alert
------------	----------------------------

## 4.3 Connecting and Installation

Read this manual before using your EDW-310 and check if all parts are included in the packaging box.

Ensure that your EDW-310 has a working SIM installed.

- Check that the SIM has not run out of credit (test the SIM in a phone to make sure it can send and receive SMS)
- Check that the SIM Lock code is turned off
- If you require the function of sending an SMS location report to the authorized phone number when it makes a call to the EDW-310, please make sure the SIM installed supports displaying caller ID.

Before inserting SIM card, cut off the power for the AVL unit.

Install SIM Card

- Unscrew and remove the front cover of your EDW-310.



- Insert the SIM card by sliding it into the card slot with the chip module facing to the connectors on PCB.
- Put back the front cover and screw it up.

Connect the GSM Antenna to the unit.

Connect the GPS Antenna to the unit.

- GPS antenna is used to receive satellite signals in the sky. It should be fixed to face the sky and should not be covered or shielded by any objects containing metal, such as the metallic windshield.



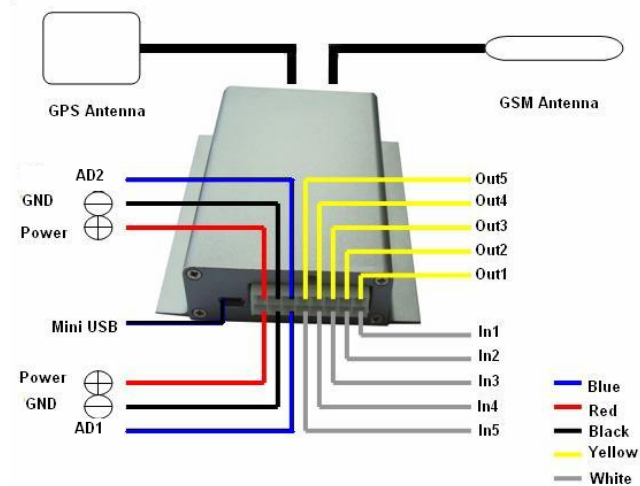
Find a suitable place inside the car for installing the unit. Wiring connections must be firm and reliable and the joints should be wrapped with insulating tape tightly. The unused electrical wire should be properly insulated.



Check if all wirings have been connected correctly and then connect the unit to the motor power.

A connector for microphone is set in the PCB. If you need to link with an extra microphone for wiretapping purpose, contact us to add this optional function before we deliver the devices to you.

**Installation Guide:**



**Descriptions of PINs**

Pin	Color	Function
1	Red	DC In. Input voltage: 9V~35V. 12V suggested.
2	Black	GND
3	White	Digital Inputs
4	Yellow	Outputs <i>( if be drove by CMD, output pin will be connect to GND inside Tracker in order that the current can flow in Tracker ) -----</i>
5	Blue	10 Bits Resolution Analog Inputs. Input voltage: 0~6V.



**Mini USB Port**

Connect the tracker with computer by USB cable for configuration ,  
 You need to install the driver - **PL-2303 Driver Installer** - for using the USB cable.  
**Refer to <GPS Tracker Parameter Editor> for configuration .**

**(note:** USB cable for configuration is optional accessory, and need buy it separately )

-----

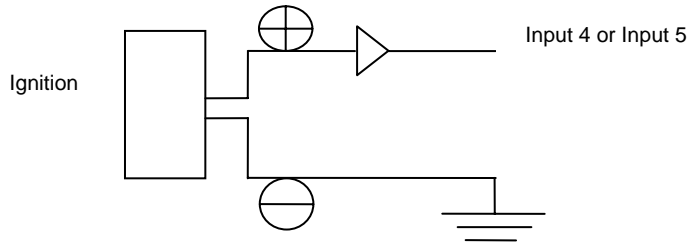
#### 4.4 Examples of Interfacing Application

##### For Input Ports

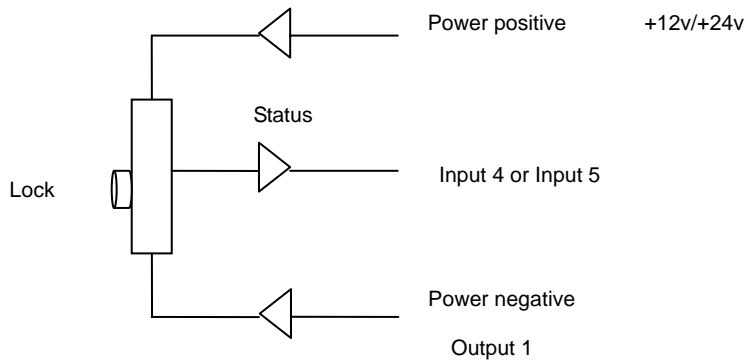
1. SOS Button - Input 1 / Input 2 / Input 3



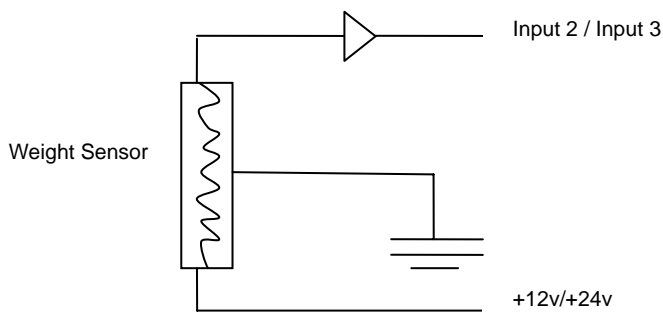
2. Ignition Detection - Input 4 / Input 5



3. Detecting Lock Status of Car's Door or Trunk(Car Boot): Locked or Unlocked - Input 4 / Input 5

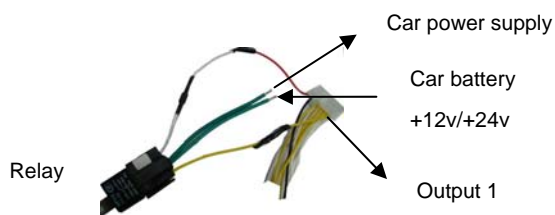


4. Connecting with Sensors (such as weight sensor) - Input 2 / Input3

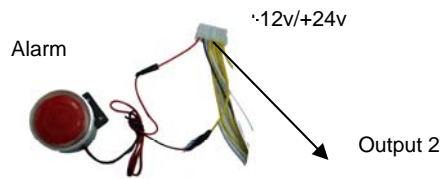


##### For Output Ports

1. Engine Cut



## 2. Connecting with Car Alarm



### For Analog Input



## 5 SMS Command

EDW-310 will only accept commands from a user with the correct password. Commands with wrong password are ignored. The default password is 000000.

### 5.1 Basic SMS Commands

#### 5.1.1 Position Report

To know the location of your EDW-310, send an SMS or make a telephone call directly to EDW-310 and it will report its location by SMS.

Command: W<password>,<000>

Notes: The default password is 000000.

Example:

SMS sent: W000000,000

SMS received:

Latitude = 22 32 36.63N Longitude = 114 04 57.37E, Speed = 2.6854Km/h, 2008-12-24,01:50

To get EDW-310's position by another easier way:

- Call EDW-310 using your mobile phone.
- After listening to the ring for 10 - 20 seconds, hang up the phone.
- Then after 20 second, your mobile phone will receive a position SMS.

#### 5.1.2 Set Interval for Automatic Timed Report

Description: Automatic timed reports will be sent to your mobile phone according to the time interval you set.

Command: W<password>,<002,XXX>

Notes: XXX is the interval in **minute**. If XXX=000 it will stop tracking

Example:

SMS sent: W000000,002,005

SMS received: Set Timer Ok/005



---

EDW-310 will then report its location by SMS every 5 minutes.

### **5.1.3 Stop Automatic Timed Report**

Description: Automatic timed reports will stop once EDW-310 receives stop command. Command: W<password>,002,000

Example:

SMS sent: W000000,002,000

SMS received: Set Timer Ok/000

EDW-310 will stop automatic timed report

*For more detailed SMS commands please go to Chapter 8 - SMS Command List*

## **5.2 GPRS Settings by SMS**

Tracking via GPRS, you should set IP, Port and APN for EDW-310.

Ensure that your SIM card in EDW-310 supports GPRS connection prior to setting.

### **5.2.1 Set ID for EDW-310**

Command: W<password>,010,ID

Note: Tracker ID must not over 14 digits.

Example: W000000,010,123456789

EDW-310 will then reply with an SMS ('Set SIM Ok/123456789') to confirm this setting.

### **5.2.2 Set APN**

Command: W<password>,011,APN,APN Name,APN Password

Note: If no APN name and password required, input APN only.

Example: W000000,011,CMNET

EDW-310 will reply with an SMS (like 'Set APN Ok/CMNET') to confirm this setting.

### **5.2.3 Set IP Address and Port**

Command: W<password>,012,IP,PORT

Example: W000000,012,202.116.11.12,8000

EDW-310 will then reply an SMS ('Set IP Ok /202.116.11.12,8000') to confirm this setting.

### **5.2.4 Set Time Interval for Sending GPRS Packet**

Command: W<password>,014,time interval(in unit of 10 seconds) (MOVE Mode: vibration )

Example: W000000,014,00003

EDW-310 will send GPRS packet every 30 seconds in Move mode(vibration)

Command: W<password>,114,time interval(in unit of 10 seconds)

(PARK Mode: no vibration )

Example: W000000,114,00012

EDW-310 will send GPRS packet every 120 seconds in Park mode(no vibration)

W000000,014,00000 is "STOP GPRS"

---

*For more information regarding of bulk configuration by USB cable please refer to < GPS Tracker Parameter Editor>.*

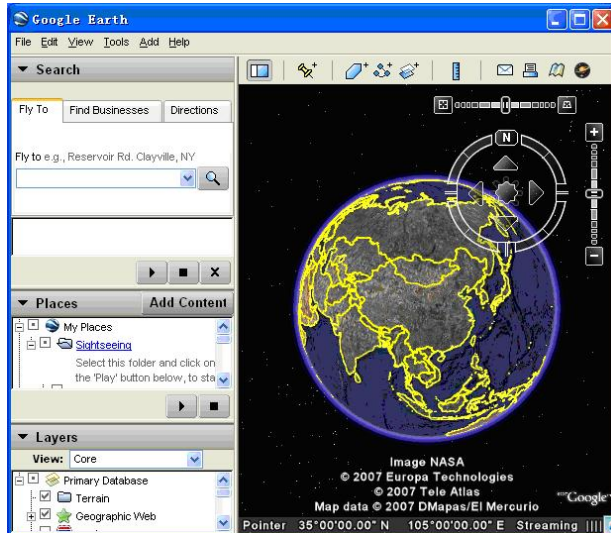
*For more information regarding GPRS settings please refer to <GPRS Communication Protocol >.*

*If you are using GpsGate Software, please contact us for writing GpsGate protocol before delivery.*

## 6 Tracking on Map

Download Google Earth from <http://earth.google.com/>

Start the Google Earth (For more information about Google Earth please refer to <http://earth.google.com/>) as the following picture shows:



Input the latitude and longitude that you receive from the tracker by SMS and click the search button. Google Earth will display the location for you.

Example:

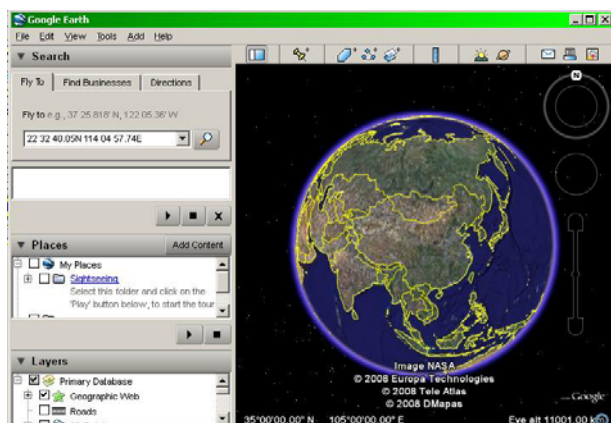
When you receive:

Latitude = 22 32 40.05N

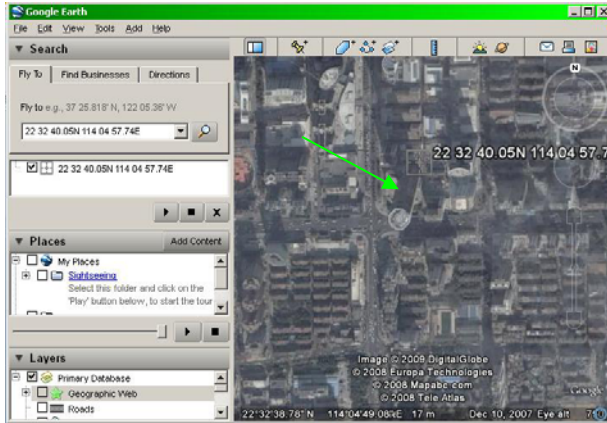
Longitude = 114 04 57.74E

Type as the following picture shows:

*(Note: you should input the latitude and longitude as: 22 32 40.05N 114 04 57.74E)*



Now you can find the location of your tracker:



Or you can start the Internet Explorer and connect to <http://maps.google.com> for displaying the location.

Or you can use local map software on PDA or car navigation device to input the coordinates.

## 7 Troubleshooting

Problem: Unit will not turn on	
Possible Cause:	Resolution:
Wiring was not connected properly	Check and make sure wiring connection is in order.
Battery needs charging	Recharge battery
Problem: Unit will not respond to SMS	
Possible Cause:	Resolution:
GSM antenna was not installed properly	Make EDW-310 connected to GSM network.
GSM Network is slow	Wait for SMS. Some GSM networks slow down during peak time or when they have equipment problems.
Unit is sleeping	Cancel sleeping mode
Wrong password in your SMS or wrong SMS format	Write correct password or SMS format
The SIM in EDW-310 has run out of credit	Replace or top up the SIM card
No SIM card	Insert working SIM card. Check in phone that the SIM can send SMS message.
SIM card has expired	Check in phone that the SIM can send SMS message. Replace SIM card if needed.
SIM has PIN code set	Remove PIN code by inserting SIM in you phone and deleting the code.
SIM is warped or damaged	Inspect SIM, clean the contacts. If re-inserting does not help try another to see if it will work.
Roaming not enabled	If you are in a different country your SIM account must have roaming enabled.
Problem: SMS received starts with 'Last...'	
Possible Cause:	Resolution:
Unit does not have clear view of the sky	Move the antenna of the unit to a location where the

	sky is visible.
EDW-310 is in an inner place	Wait for the target to come out
Battery is low	Recharge the unit and the GPS will start working.

## 8 SMS Command List

(Remarks: \*\*\*\*\* is user's password, and the default password is 000000)

Description	Command	Remarks
<b>Get current location</b>	W*****,000	Get current location of EDW-310
<b>Change user's password</b>	W*****,001,#####	***** is old password ##### is new password
<b>Set interval for automatic timed report</b>	W*****,002,XXX	XXX is the interval in minute. If XXX=000 it will stop tracking
<b>Set preset phone number for SOS button</b>	W*****,003,F,P,T	F=0, to turn off this function; F=1, to send SMS;  As SOS button is linked to IN1, P=1. T: Preset phone number. Max 16 digits
<b>Set low power alert</b>  When EDW-310 voltage is lower than the preset value, it will send one low power alert to the SOS preset number.	W*****,004,X	X (voltage preset value) =0 , to turn off this function =1 , <3.3V send SMS alert =2 , <3.4V send SMS alert =3 , <3.5V send SMS alert (default ) =4 , <3.6V send SMS alert =5 , <3.7V send SMS alert
<b>Set over speed alert</b> When EDW-310 speeds higher than the preset value, it will send an SMS to the SOS preset number.	W*****,005,XX	XX (the preset value of speed) =00 , to turn off this function =[01, 20] (unit: 10Km/h) For example, W000000,005,08, it will send alert when it is over 80Km/h
<b>Set Geo-fence alert</b>  When the EDW-310 moves out of preset scope, it will send one Geo-fence SMS to the SOS preset number.	W*****,006,XX	XX ( preset distance to original place ) =00, close =01, 30m =02, 50m =03, 100m =04, 200m =05, 300m =06, 500m =07, 1000m =08, 2000m

<p><b>Extend Settings</b></p>	<p>W*****,008,ABCDEFGF###</p>	<p><b>A=0</b>, turn off the function of sending an SMS location report to the authorized phone number when it makes a call to EDW-310.</p> <p><b>A=1</b>, turn on the function of sending an SMS location report to the authorized phone number when it makes a call to EDW-310.</p> <p><b>B=0</b>, location data of NMEA 0183 GPRMC will be interpreted into normal text for easy reading.</p> <p>For example:  <i>Longitude = 114 degree - 04 cent -57.74 second</i>  <i>Latitude = 22 degree -32 cent -40.05 second</i></p> <p><b>B=1</b>, location data complies with NMEA 0183 GPRMC protocol.</p> <p>For example:  <i>\$GPRMC,072414.000,V,3114.3763,N,12131.3255,E,0.00,0.00,050805,*00</i> <b>C=0</b>,</p> <p>turn off the function to automatically hang up an incoming call.</p> <p><b>C=1</b>, turn on the function to automatically hang up an incoming call after 4 - 5 rings.</p> <p><b>D=0</b>, Turn off the function of sending an SMS when EDW-310 is turned on.</p> <p><b>D=1</b>, Turn on the function of sending an SMS to SOS number when EDW-310 is turned on.</p> <p><b>E=0</b>, reserved</p> <p><b>E=1</b>, EDW-310 shuts down automatically when the power voltage lower than 3V. <b>F=0</b>, Turn off the alert when EDW-310 enters GPS blind area.</p> <p><b>F=1</b>, Turn on the alert when EDW-310 enters GPS blind area. SMS is to be sent to SOS number</p> <p><b>G=0</b>, LED light works normally</p> <p><b>G=1</b>, LED light stops flashing when EDW-310 working.</p> <p><b>###</b> is the ending character  (default value is: ABCDEFG=1000100 )</p>
-------------------------------	-------------------------------	--

<b>Presetting by SMS for GPRS tracking (Ensure that your SIM card supports GPRS connection prior to setting)</b>		
Set ID for EDW-310	W*****,010,ID	Tracker ID must not over 14 digits.
Set APN	W*****,011,APN,APNName,APN Password	If no APN name and password required, just insert APN only; APN defaulted as 'CMNET'; APN + APN name + password not over 39 characters.
Set IP Address and Port	W*****,012,IP, Port	IP: xxx.xxx.xxx.xxx Port: [1,65534]
Set Time Interval for Sending GPRS Packet MOVE Mode: vibration	W*****,014,XXXXX	XXXXX should be in five digitals and in unit of 10 seconds. XXXXX=00000, to close this function; XXXXX=00001~65535, time interval for sending GPRS packet and in unit of 10 seconds.
Set Time Interval for Sending GPRS Packet PARK Mode: no vibration	W*****,114,XXXXX	XXXXX should be in five digitals and in unit of 10 seconds. XXXXX=00000, to close this function; XXXXX=00001~65535, time interval for sending GPRS packet and in unit of 10 seconds.
<b>For more information regarding GPRS settings please refer to &lt;GPRS Communication Protocol&gt;</b>		
<b>Output Control</b>	W*****,020,P,F	P =1, Out1 =2, Out2 =3, Out3 =4, Out4 =5, Out5 F =0, to close the output =1, to open the output
<b>Output Control (Safe mode)</b> ----- This function is achievable when the speed is below 10km/h and GPS is available.	W*****,120,ABCDE	ABCDE represents Out1, Out2, Out3, Out4, and Out5 respectively. If A or B or C or D or E, =0, to close the output =1, to open the output =2, to remain previous status
<b>Set phone number for wiretapping</b>	W*****,030,T	T is the telephone number for wiretapping and max. 16 digits
<b>Set time zone difference</b>	W*****,40,FTT	F: '+' or '-' TT: time zone difference (unit: hour) example, w000000,040,-08