



GL200 Quick Start V1.01

Page 1 : Basic Operation

1 **Check Parts List**

The USB Data_Cable_M is not in the delivery list. Please contact your vendor for it.

2 **Check The Appearance**

Function Key SIM Card Interface Mini USB And External GPS Antenna Interface
 Three Indicator LED Power Key

3 **Install SIM Card**

4 **Turn On GL200**

Power Key

5 Find "PL2303_Prolific_DriverInstaller_v10518.zip" in develop suit and install the drive for PL2303. If you have already installed it please go to Step 6.

PL-2303 Driver Installer Program
 Welcome to the InstallShield Wizard for PL-2303 USB-to-Serial
 The InstallShield Wizard will install PL-2303 USB-to-Serial on your computer. To continue, click Next.

6 **Connect GL200 to computer by USB Data_Cable_M.**

To mini USB To computer

7 Find "Queclink GL200 Manager Tool Vx.xx.exe" in develop suit and run it to configure the running parameters of GL200. Please refer to Page 2 for detail.

COM Settings
 COM: COM4
 Baudrate: 9600
 Password: gl200
 Show at startup

8 Before the first time using GL200, please full charge the battery

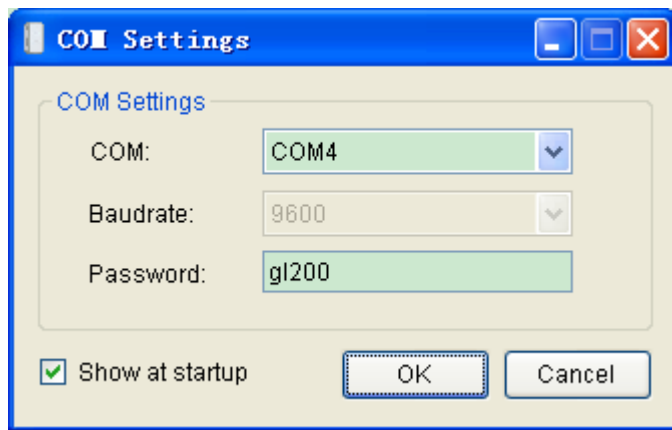
9 Better place the GL200 under the open sky, and let the surface which has indication Led to the sky.

Here is GPS Antenna

Page 2 : PC Manager Tool Quick Start

1

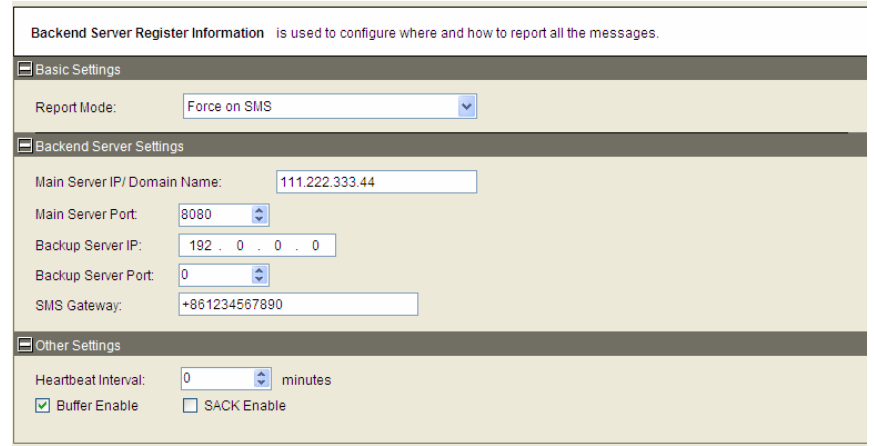
Run manager tool. Select correct Com port and input default password "gl200". Then press OK.



2

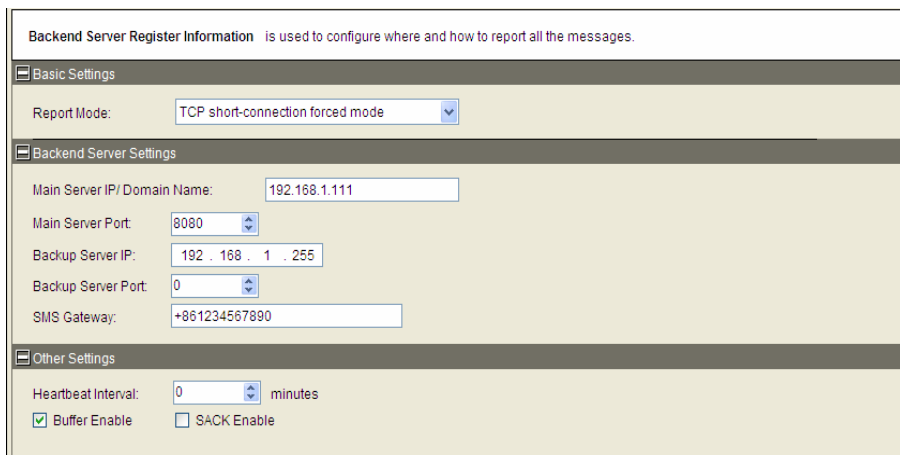
If you want to test the GL200 by SMS then set "Report Mode" to "SMS" and input the phone number which you want to receive the SMS from GL200. After that you can go to Step 6.

Otherwise please go to Step 3



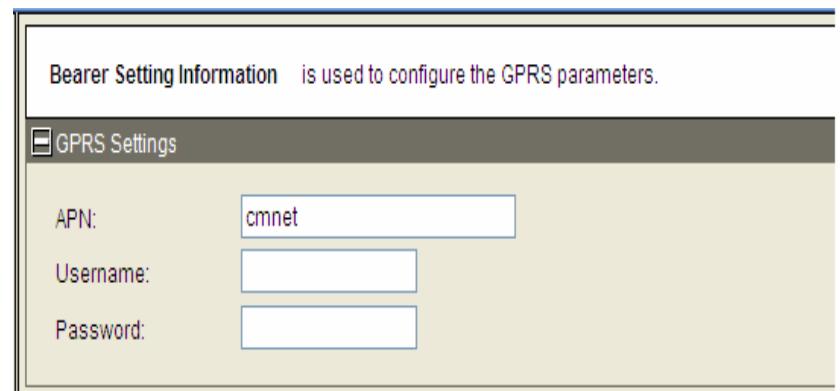
3

Set "Report Mode" to "TCP Short Connection". input the IP address and port number of the backend server. Please make sure the IP address can be accessed by internet and the data sends to this address can be received.



4

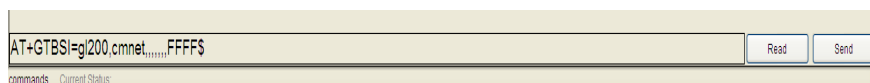
Please contact your SIM card provider and get the APN information for GPRS. Input it in GTBSI setting.



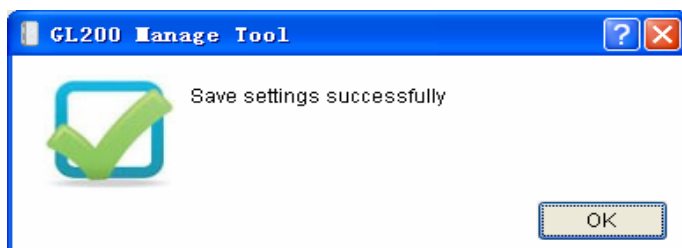
5

Press the "Send" button and update the parameters of GL200. Then the GL200 can report information to your backend server or SMS receiver.

Note: These commands can also be sent to GL200 by SMS.



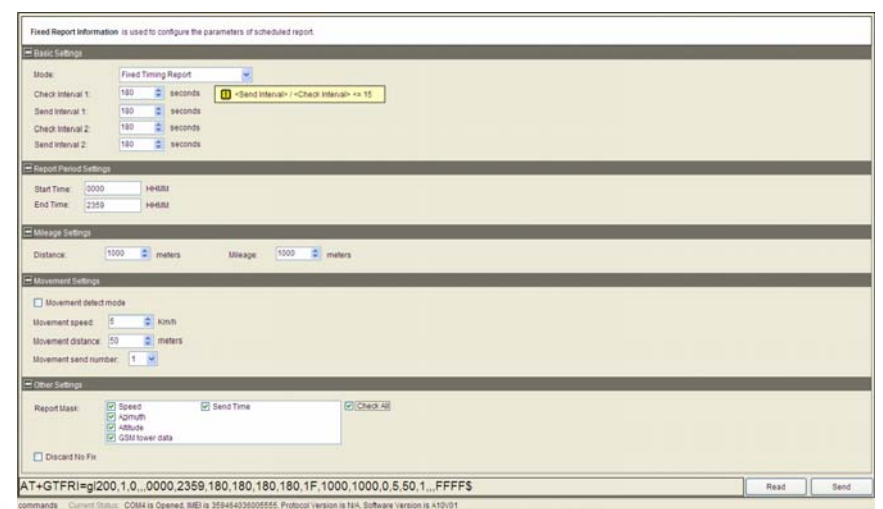
Command has been accepted when you see the success window.



6

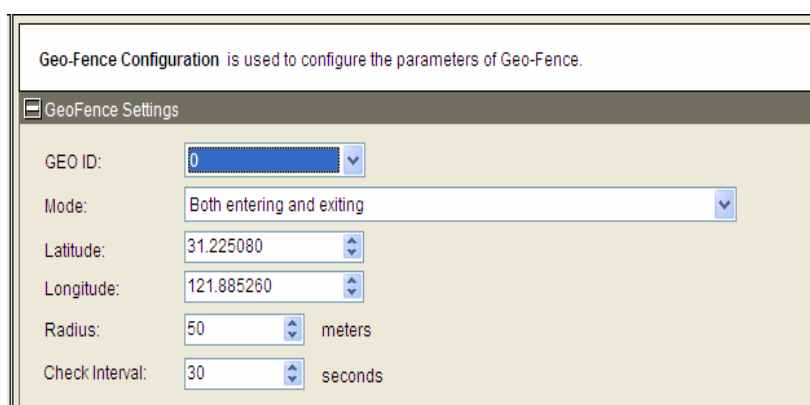
Set the parameters of scheduled fixed timing report so that the GL200 will report it's position to backend server period periodically. Press "Send" button to update the parameters.

Follow screen shot shows how to configure the GL200 to report it's position every 3 minutes.



7

The following screen shot shows how to create a Geo-Fence rule. Press "Send" button to update the parameters.



After these steps. GL200 will have some basic tracking functions like scheduled timing report and Geo-Fence. For other advanced functions of GL200 please refer to "GL200 @Tracker Air Interface Protocol" or visit our website.