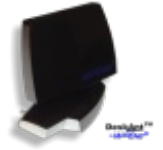


DeskAnt™



10dB Wide Band Antenna for Amplifiers, Boosters, Repeaters, Modems, Hotspots

The DeskAnt™ is a top quality, semi-directional antenna that can be used as an internal antenna for amplifiers/repeaters/boosters (GSM/PCS/DCS/2G/3G/4G/AWS/UMTS/WiMAX), direct-connect antenna for cellular devices such as cell phones, modems, and mobile hotspots, direct-connect antenna for Wi-Fi devices, and direct-connect antenna for WiMAX devices. It is meant for the indoors and the mount type is for desktop. The DeskAnt™ has a bandwidth of 700MHz to 5200MHz and a peak gain of 10.4 dB. Its nominal impedance is 50 Ohms and its connector type is SMA-Female. The DeskAnt™ weights 1.2 lbs (540 g) and measures 7.3 x 8 x 7.1 in (18.25 x 20 x 17.75 cm). The DeskAnt™ is a durable, high-efficiency antenna with top-notch features and performance, and it's made in the USA with high quality components and skilled craftsmanship.

Main Features

- Perfect as an internal antenna for amplifiers/repeaters/boosters (GSM/PCS/DCS/2G/3G/4G/AWS/UMTS/WiMAX), direct-connect antenna for cellular devices such as cell phones, modems, and mobile hotspots, direct-connect antenna for Wi-Fi devices, and direct-connect antenna for WiMAX devices
- Very wide operational bandwidth of 700MHz to 5200MHz. Peak gain of 10.4 dB. Semi-Directional radiation type with desktop type mount
- Nominal impedance of 50 Ohms with vertical polarization and recommended mainly for indoors use
- Swiveable with wind resistance up to N/A and operating temperature of -40°F to 185°F (-40°C to 185°C). Horizontal radiation pattern of 250°
- Made in the USA with high quality components and skilled craftsmanship. One year manufacturer warranty included

Data Sheet and Technical Specifications

Trademark Name	DeskAnt™
Part Number / SKU	DSK-50-OHM
UPC	633643376920
Applications	Internal antenna for amplifiers/repeaters/boosters (GSM/PCS/DCS/2G/3G/4G/AWS/UMTS/WiMAX), direct-connect antenna for cellular devices such as cell phones, modems, and mobile hotspots, direct-connect antenna for Wi-Fi devices, and direct-connect antenna for WiMAX devices
Environment	Indoors

10dB Wide Band Antenna for Amplifiers, Boosters, Repeaters, Modems, Hotspots

Radiation Type	Semi-Directional
Mount Type	Desktop
Connector Type	SMA-Female
Bandwidth	700MHz to 5200MHz
Nominal Gain at 750MHz	8 dB
Nominal Gain at 800MHz	8.2 dB
Nominal Gain at 850MHz	8.4 dB
Nominal Gain at 900MHz	8.6 dB
Nominal Gain at 1700MHz	9 dB
Nominal Gain at 1800MHz	9.2 dB
Nominal Gain at 1900MHz	9.4 dB
Nominal Gain at 2100MHz	9.6 dB
Nominal Gain at 2400MHz	9.8 dB
Nominal Gain at 2500MHz	10 dB
Nominal Gain at 2600MHz	10.2 dB
Nominal Gain at 2700MHz	10.4 dB
Nominal Gain at 3500MHz	11 dB
Standing Wave Ratio (VSWR) at 750MHz	1.7:1 typical (2.1:1 max)
Standing Wave Ratio (VSWR) at 800MHz	1.7:1 typical (2.1:1 max)

10dB Wide Band Antenna for Amplifiers, Boosters, Repeaters, Modems, Hotspots

Standing Wave Ratio (VSWR) at 850MHz	1.5:1 typical (1.7:1 max)
Standing Wave Ratio (VSWR) at 900MHz	1.5:1 typical (1.7:1 max)
Standing Wave Ratio (VSWR) at 1700MHz	1.3:1 typical (1.5:1 max)
Standing Wave Ratio (VSWR) at 1800MHz	1.3:1 typical (1.5:1 max)
Standing Wave Ratio (VSWR) at 1900MHz	1.3:1 typical (1.5:1 max)
Standing Wave Ratio (VSWR) at 2100MHz	1.3:1 typical (1.7:1 max)
Standing Wave Ratio (VSWR) at 2400MHz	1.3:1 typical (1.7:1 max)
Standing Wave Ratio (VSWR) at 2500MHz	1.3:1 typical (1.7:1 max)
Standing Wave Ratio (VSWR) at 2600MHz	1.3:1 typical (1.7:1 max)
Standing Wave Ratio (VSWR) at 2700MHz	1.3:1 typical (1.7:1 max)
Standing Wave Ratio (VSWR) at 3500MHz	1.3:1 typical (1.7:1 max)
Nominal Impedance	50 Ohms
Front-Back Ratio	5 dB

10dB Wide Band Antenna for Amplifiers, Boosters, Repeaters, Modems, Hotspots

Polarization	Vertical
Horizontal Beamwidth	250°
Vertical Beamwidth	120°
Maximum Continuous Applicable Power	35 W
Power Requirements	None (passive antenna)
Net Weight (Mount Included when applicable)	1.2 lbs (540 g)
Dimensions (Height x Width x Depth)	7.3 x 8 x 7.1 in (18.25 x 20 x 17.75 cm)
Wind Rate Resistance	N/A
Lightning Protection	N/A
Radome Material	UV-Protected ABS Plastic
Operating Temperature	-40°F to 185°F (-40°C to 185°C)
Other Features	Swiveable
Production Status	Active



sales@eddywireless.com