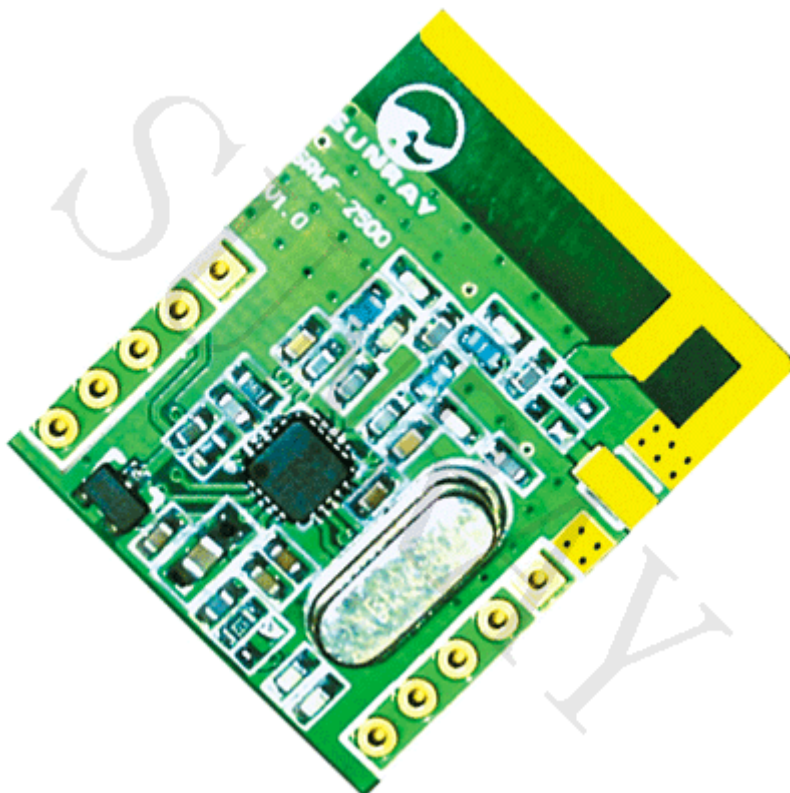


SRWF-2500 Wireless Transceiver Data Module User Manual



Contents

I. Applications Field	3
II. Product Description.....	3
III. Pins Description.....	4
IV. Working qualification	5
V. Technical specification.....	5
VI. Module Dimension.....	6

I. Applications Field

- 2400-2483.5 MHz ISM/SRD band systems
- Consumer electronics
- Wireless game controllers
- Wireless audio
- Wireless keyboard and mouse
- RF enabled remote controls

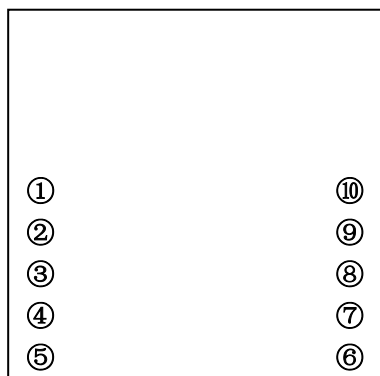
II. Product Description

This product is for 2.4GHz single RFIC transceiver module, using the low-power chip CC2500 from TI to meet a variety of low-cost and low-power wireless product development application.

This product is mainly used for the secondary development of clients without microcontroller. Module is equipped with a 2.54mm pin-pin distance of communication with a microcontroller interface, about the specific definition and parameters of pin-description, please read the details of this document. In order to develop your system based on this product more efficient and convenient, you can download the datasheet at the following links to TI's CC2500 and improve the efficiency of your development.

Download link is: <http://focus.ti.com/lit/ds/symlink/cc2500.pdf>

III. Pins Description



Pin No	Item	Pin type	Description
1	GND	Ground	Analog and digital noise isolation ground connection
2	VCC	Power	3V ~ 3.6V power supply connection
3	SI	Digital input	Serial configuration interface, data input
4	SCLK	Digital input	Serial configuration interface, clock input
5	SO/GDO1	Digital output	Serial configuration interface, data output. Optional general output pin when CSn is high
6	GDO2	Digital output	<ul style="list-style-type: none"> ◇ Test signals ◇ FIFO status signals ◇ Clear Channel Indicator ◇ Clock output, down-divided from XOSC ◇ Serial output RX data
7	GDO0	Digital I/O	<ul style="list-style-type: none"> ◇ Test signals ◇ FIFO status signals ◇ Clear Channel Indicator ◇ Clock output, down-divided from XOSC ◇ Serial output RX data ◇ Serial input TX data
8	CSn	Digital input	Serial configuration interface, chip select
9	NC		No connection
10	NC		No connection

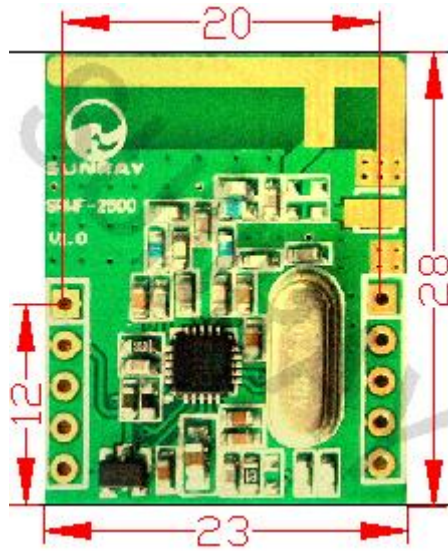
IV. Working qualification

Parameter	Min value	Max value	remark
Temperature	-20℃	60℃	
Working voltage	3.0V	3.6V	
Power supply current	>30mA	~	
Working humidity	10%	90%	

V. Technical specification

Item	Parameter	Note
Modulation mode	FSK	
Working frequency	2400MHz ~ 2483.5MHz	
Transmitting power	≤ 1dbm	
Receiving sensitivity	≤-105dbm(1200bps)	
Channel amount	8channel	or more
Transmitting current	21±1mA (0dbm)	
Receiving current	17±1mA (0dbm)	
Sleeping current	≤ 7μA	normal temperature -20~60℃
Dimension	28mm×23mm×8mm	
Transmitting distance	70m(9600bps , 0dbm)	PCB antenna on-chip

VI. Module Dimension



Unit: mm